



Southeast
Service
Cooperative

Connections

May 2022

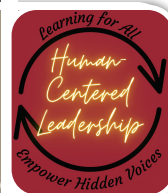
Southeast Minnesota
Spelling Bee Champ!

P3



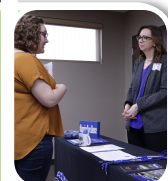
Human Centered
Leadership

P5



STEM Forward Forum
Receives Top Ranking

P9



Embracing Resiliency

Northfield Knowledge Bowl Team Takes Fourth Place at State!

By Katie Hartman

The top 48 teams, out of over 1000 across the state, competed at the Minnesota Service Cooperatives' State Knowledge Bowl Meet held near Brainerd on April 7-8.

The State Champions are:

- Park Christian, A Division
- Buffalo Black, AA Division

Please [visit our website](#) for more information

We're so proud of these students!



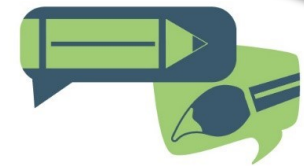
Northfield White earned 4th place in the AA Division!

Other Teams Competing From Southeast Minnesota Were:

A Division
Caledonia and Chatfield

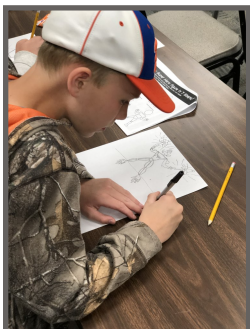
AA Division
Northfield Gold and Northfield Maroon

35th Annual Young Authors, Young Artists Conference May 17 - 19



Young Authors
Young Artists

Students in grades 3-5 are welcome to join in learning from over 15 professionals in their field. Some topics include: sculpting, comic drawing, creative storytelling, pastel and acrylic painting, origami, song writing, and so much more!



Click [here](#) for more information or to register.

Wabasha-Kellogg 8th Grader is the Southeast Minnesota Spelling Bee Champion

By Katie Hartman

Twelve spellers (six from each Regional Spelling Bee) competed in the Final Spelling Bee on March 1, at SSC. These 12 students were narrowed down from 59 students from 27 districts in southeast Minnesota who participated in the two Regional Spelling Bees on February 8.

Sam Passe, an 8th grade student from Wabasha-Kellogg Public Schools was declared the champion after correctly spelling the word *discretionary*.

Sam advances to the 94th annual Scripps National Spelling Bee that takes place May 29 - June 3, in Washington, D.C. Sam received a first-place trophy, *Webster's Third New International Dictionary* (provided by Scripps National Spelling Bee), 2022 United States Mint Proof Set (The Samuel Louis Sugarman Award from Scripps), and a one-year subscription to Britannica Online Premium.

Addy Kobler, a 5th grade student from Plainview-Elgin-Millville Public Schools, was the 1st runner-up. Addy received a trophy, and *Merriam-Webster Collegiate Dictionary* (donated by Merriam-Webster).

Spelling Bee Winner!



*Southeast Minnesota
Spelling Bee Champion,
Sam Passe*



Other students who participated in the Southeast Minnesota Final Spelling Bee:

Speller	District	Grade
Ella Hoscheit	Caledonia	8
Hayden Reed	Caledonia	6
Johanna Spielman	Owatonna	7
Austin Luckey	Pine Island	7
Rayna Siwani	Rochester	5
Igor Vuckovic	Rochester	7
Lillie VanBuskirk	Rochester Catholic	8
Eliana Lanners	Schaeffer Academy	8
Kolton Nerstad	Spring Grove	8
Tommy Passe	St. Felix Catholic	6

Two SE MN School Districts Hosting Althing Student Health Events

By Kari Kubicek



SSC is excited to announce that Caledonia Area Schools and Zumbrota-Mazeppa Public Schools have been awarded funding provided by the Minnesota Department of Health to host Althing Student Health Events at their districts this spring!

Althing Student Health Events allow districts the opportunity to provide broad, qualified health screeners to their student population in a more efficient and effective manner. The screeners effectively identify and mitigate depression, addiction, safety, food security and other potential health issues while providing immediate interventions and referrals to qualified health providers through the Phrazer/Kitsune® platform. This service will not only help districts proactively identify students with at risk behaviors that were not identified previously, but it will also ensure the district has the capacity to support these students with the additional resource of Althing's qualified health experts.

As stated by Zumbrota-Mazeppa's School Psychologist, Katie Kennedy, "This event could increase our knowledge of students struggling with

mental health issues and help us focus on high need areas. We could then develop a more proactive approach to help the general student population and offer check-ins or interventions for students in need. By assessing and addressing mental health needs, students can improve their focus on academics."

Craig Ihrke, Caledonia's Superintendent, commented on the proactive approach as well, "We believe hosting the Althing Student Health Event may help discover a student who we otherwise may not have known was having a difficult time."

Click below to view a brief video on the student health event experience.



Student Health Events are just one solution available through SSC's partnership with Althing. This partnership, which allows for SSC to distribute Althing's breakthrough mental health, addiction, and general health services with immediate provider access, includes School Staff Health Services, Employee Health Services, Employee Convenience Care and Wellness, and more.

Learn more about the Althing Health Service offered through SSC by clicking [here](#). Contact Kari Kubicek at SSC to learn more!

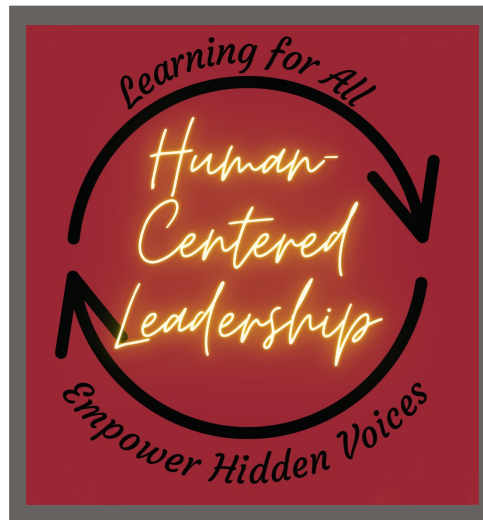
Human-Centered Leadership: Coaching for Leadership Teams

Kari Kubicek

SSC is excited to announce its partnership with Spring Grove Public Schools to bring the Human-Centered Leadership professional development opportunity to our districts! Experienced administrators Rachel Udstuen and Gina Meinertz of Spring Grove Schools have researched how transformational change works within systems through their work with partner organizations such as the Bush Foundation, 2 Revolutions, Minnesota Learner-Centered Network, Hamline University, and Spring Grove Public Schools. They will work with you through a process that will help you to listen and search for hidden voices within your organization before using the design cycle to act on change.

The Coaching Cycle

Leaders will identify a core leadership team who will develop a problem of practice before diving into the human-centered leadership cycle. Leadership teams will use improvement science and empathy interview tools to listen to the stories and needs of the people within their system. From this feedback, they will create prototypes and action plans. They will share these for more rounds of feedback before implementation and reflection. This process will create agency and empower the people within your system to move beyond identifying barriers to creating results.



A typical coaching cycle will take approximately 35 hours, and a minimum of 15 hours will take place in a face to face setting. The process includes direct facilitation time as well as the facilitators' ongoing support and research to support your team's work. This training is a valuable opportunity for both education and non-education organizations.

The Facilitators



Rachel Udstuen has been the Superintendent of the Spring Grove School District since 2010. Prior to that she was the Head of Schools at Saipan International School, located in the Commonwealth of the Mariana Islands, and an English Language Arts Teacher. She serves as a mentor for Minnesota superintendents through the AASA National Superintendent Certification program. She is

passionate about transforming systems to be student centered, and digging for the hidden voices within these systems.

Gina Meinertz is the Assistant Superintendent and Transformational Leader in Spring Grove. She is a student-centered leader who works



with systems and stakeholders to create meaningful experiences for all. She uses a blend of expertise in place-based, experiential, whole child, project-based, and community-based learning. Her journey through nine years as a Montessori Adolescent Program teacher, five years as an Elementary Principal and Curriculum Director, and two years as an adjunct professor at the Educational Leadership Program at Viterbo University brought her to the dream of transforming the educational system to shift ownership and power of learning to the students.

Request a Proposal

Contact [Rachel Udstuen](#) or [Gina Meinertz](#) to share a brief overview of where you would like to see support. Rachel and Gina will create a personalized proposal for your team outlining steps and timelines for your coaching cycle.

SE MN Redefining Ready Cohort 2 Opportunity

By Kari Kubicek

SSC is inviting member districts to sign up for Cohort 2 of the SE MN Redefining Ready program. This two year experience will run from August of 2022 through July of 2024. Districts participating in the SE MN Redefining Ready cohort would commit a team of individuals to a two year experience working through a process that would include, but not be limited to: 1) defining, accurately tracking and reporting of district metrics based on the RR indicators in alignment with the district strategic plan, 2) educating and maintaining communications with staff, community, local businesses, families and students on the importance of tracking and meeting these indicators to support student success, 3) providing resources to support the work including financial and district leadership buy in, 4) learning to utilize the data to improve student experience and success, and 5) produce an annual district scorecard illustrating the district's progress in the multiple metrics being tracked based on the Redefining Ready indicators.

Thirteen districts in SE MN began the Cohort 1 experience in August, 2021. Ashley Kaplan, Director of Teaching and Learning at Kasson-Mantorville Public Schools (Cohort 1 member) described her district team's experience with the program:

"Engaging in the Redefining Ready cohort has given our K-12 leadership team a new lens through which to view our students' K-12



experience within our district. We have been able to set clearly defined goals for College and Career Readiness, are implementing programming based on the readiness indicators, and are forming a community committee to create a Profile of a Learner. Redefining Ready has allowed us to evaluate and make decisions for our learners that are aligned with evidence-based metrics in order to ensure we are preparing our students for college, career, and life."

Training dates for Cohort 2 are scheduled as follows:

- **August 2, 2022**
Cohort Launch - full day face-to-face session at SSC
- **November 2, 2022**
Three hour face-to-face session
- **March 2, 2023**
Three hour face-to-face session
- **August 1, 2023**
Full day face-to-face session
- **November 1, 2023**
Three hour face-to-face session
- **March 5, 2024**
Three hour face-to-face session

The cost per team to participate in the two year cohort is \$1,800.00.

Interested in participating in the SE MN Redefining Ready Cohort 2 or learning more about this opportunity? Please contact Kari Kubicek at SSC.

What is Redefining Ready?

Redefining Ready! is a national campaign launched by AASA, The School Superintendents Association, to introduce a new multi-metric, research based approach to determining what it means to be college ready, career ready, and life ready. This campaign is designed to change the national narrative regarding public education from a one-standardized-test judges all (students, teachers, parents, and communities) philosophy to a focus on readiness for our students.

The new readiness indicators, developed from research by world-class organizations, more accurately reflect the educational landscape of the 21st century. Multiple metrics include Advanced Placement and International Baccalaureate courses, Algebra II, early college credits, industry credentials, attendance, and community service, among others.

View the College and Career Ready Indicators on page 7

College Ready Indicators

Students are **College Ready** if they meet either the academic indicators **OR** standardized testing benchmarks listed below.

Academic Indicators - GPA 2.8 out of 4.0 and **one or more** of the following academic indicators:

- Advanced Placement Exam (3+)
 - Advanced Placement Course (A, B or C)
 - Dual Credit College English and/or Math (A, B or C)
 - College Developmental/Remedial English and/or Math (A, B or C)
 - Algebra II (A, B or C)
 - International Baccalaureate Exam (4+)
- Standardized Testing Benchmarks (minimum score)**
- SAT Exam: Math (530) | Reading and Writing (480)
 - ACT Exam: English (18) | Reading (22) | Science (23) | Math (22)
 - College Readiness Placement Assessment (determined by post-secondary institution)

Additional Factors that Contribute to College Success

Earning As, Bs, Cs; FAFSA completion; enrollment in career pathway course sequence; college academic advising; participation in college bound bridge programs; senior year math class; completion of a math class after Algebra II.

Career Ready Indicators

Students are **Career Ready** if they have identified a career interest and meet two of the behavioral and experiential benchmarks listed below. In addition, students entering the military upon graduation must meet the passing scores on the Armed Services Vocational Aptitude Battery (ASVAB) for each branch of the military.

Career Cluster Identified and **two or more** of the following benchmarks:

- 90% Attendance
- 25 hours of Community Service
- Workplace Learning Experience
- Industry Credential
- Dual Credit Career Pathway Course
- Two or more organized Co-Curricular Activities

SSC a Best Place to Work - Again!

Staff and Board Celebrate 10th Time Winning Award

A variety of area southeast Minnesota companies were recently recognized as the “Best Places to Work” in Southeast Minnesota for 2022. SSC was one of the recipients in the small employers category.

WDI and the Workforce Development Boards of Southeast Minnesota and Winona join together to bring the “Best Places to Work” program to Southeast Minnesota.

SSC’s Executive Director Steve Saltee shared that “The staff and Board of Directors at SSC are very appreciative of this award and the strong partnership that we have with WDI. The past two years have challenged us as an organization, but also made us stronger. We do our best to support our employees while challenging them to grow within our organization.”

The “Best Places to Work” awards program is a commissioned study by Workforce Development, Inc. The purpose of the program is to recognize some of the best employers in our local area and provide vital information to companies about the practices they use to attract and retain employees.

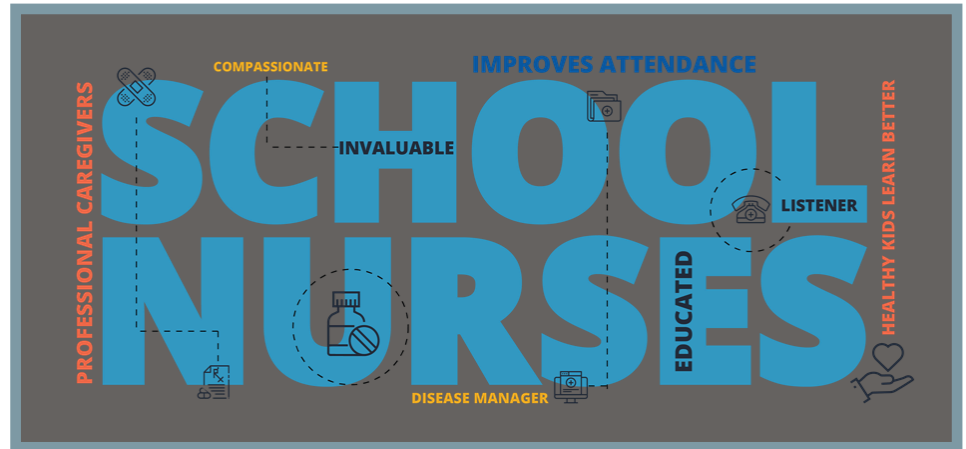
Exciting New School Health Supports Coming Soon!

By Amy Grover

Thanks to a partnership and grant funding from the Minnesota Department of Health, the Minnesota Service Cooperatives are collaborating statewide to support school nurses and school mental health professionals.

Throughout this ongoing pandemic, school nurses have had to focus on COVID related tasks and as a result have been pulled from many duties that require attention and maintenance. Many school nurses say they are burned out after taking on additional responsibilities related to mitigation strategies and protocols, contact tracing, and addressing indirect health consequences of the pandemic, such as delays in kids getting other critical vaccines or soaring mental health concerns. On top of that, many schools are experiencing challenges when recruiting nurses and struggle to find qualified applicants due to the pre-existing nursing shortage. Compounding the problem, high turnover exacerbates any staffing shortage. MDH and MSC want to help!

To address this critical need, our statewide approach aims to provide regional support to assist schools with their recovery phases by providing nursing and social emotional learning resources. This will include monthly Community of Practice virtual meetings, a school health conference, professional development opportunities, an online repository of resources, and



other solutions that will support these essential workers!



To that end, Southeast Service Cooperative is thrilled to introduce Dr. Kara De La Fosse, who brings with her a Doctorate of Education (Ed.D), Master of Nursing Education (MSN), Bachelor of Nursing (BSN), Bachelor of Early Childhood Education (BS. Ed), and Public Health Nursing (PHN) certifications. She has been instrumental in building up the Certified Nursing Assistant program at Riverland Community College and has played an integral role in launching Governor Walz's Next Generation Nursing Assistant

Initiative. Dr. Kara will be reaching out to school nurses at districts in southeast Minnesota to assess needs that could be met through regional collaboration.

In the meantime, don't hesitate to reach out to her at kdelaforse@ssc.coop or 507-273-9730

Spring Educator Forum Receives World-Class Ranking!

16 WSU-Rochester Students Talk Employment Opportunities

By Sarah Ness

This year's Spring Educator Forum, held on April 13 at SSC's Wood Lake Meeting Center, brought new faces, new energy, and a world-class attendee customer satisfaction score.

Recognizing the teacher shortage in STEM content areas, Winona State University's Rochester Education program partnered with STEM Forward to bring 16 students to the Spring Educator Forum to network with their future employers and colleagues, learn about student teaching and employment opportunities, and build confidence and resources in teaching STEM.



"I enjoyed the schools I got to talk to. After meeting one particular school, I'm planning to do a campus visit soon

and talk about coming and teaching in the future. I am so thankful for this event. I am glad I chose to attend." said Rachel Bera, WSU student.

"I received so much information to carry with me in a future classroom during my presentation. Also, talking to the various individuals at the Future Educator Career Fair made my week (or month)!" said Mary Amdahl, WSU student.

Current educators from Albert Lea, Byron, Dover-Eyota, Kenyon-Wanamingo, Northfield, Pine Island, Rochester, Triton and WSU students bestowed a 71 Net Promoter Score to the Spring Educator Forum. This world-class customer satisfaction ranking is extremely hard to come by.

Brian Harris, Science Teacher at Dover-Eyota Schools, says, "This event was very innovative and fun!"

Future events will take place in November 2022 and April 2023. Watch www.ssc.coop for more details.

STEM Singing Day Survey



Does your high school want to celebrate seniors making choices to enter careers that fuel your local community? Please take a few minutes to have your graduating seniors complete this five-minute survey to glean:

- Student choices for post-secondary education, apprenticeship, military, or employment after high school.
- Influences on youth that impact these choices.
- Preferred methods youth request to learn about these choices.

[View or share survey.](#)

Results from this survey will facilitate cross-sector knowledge building, collaboration, and collective action.

Teacher Recruitment and Marketing Campaign

The Minnesota Professional Educator Licensing and Standards Board (PELSB), the state agency that oversees the issuance and renewal of teacher licenses in the state of Minnesota, is announcing the launch of an outreach campaign designed to elevate the teaching profession and actively recruit teachers, focusing specifically on individuals of color and of Indigenous descent.

This marketing effort is aimed primarily at high school and college students who are in the process of deciding their career paths, as well as adults seeking a career change. These efforts seek to identify and confirm the incentives and motivations for entering and staying in the teaching profession, as well as the barriers that discourage Minnesota educators from continuing their professional journey. The project also seeks to shift the unfounded perceptions and myths about the teaching profession, and change existing narratives in an effort to elevate the profession. You can learn more about this program [here](#).

To conduct this work, PELSB has contracted with Plum Blossom Strategy LLC, led by Dr. Rose Wan-Mui Chu, who is working in partnership with Collectivity, led by Scott Cole and Shehla Mushtaq, and VitaminK12 LLC, led by Chris Hoehn

Since the onset of the project in early February, the team has been planning the structure of the work, reviewing audience research, and inventorying existing resources

There will be many opportunities to participate in the information and research phases of the project. We welcome input from all corners of the field.

If you are interested in joining this work, wish to learn more, or provide other comments, please click [here](#).

ICYMI: Minnesota Statewide Virtual Job Fairs for Educators

Minnesota's public school employers are actively recruiting and hiring for immediate placement, and the 2022-2023 school year. Current and aspiring educators have multiple opportunities to meet in private, 1-on-1 conversations with administrators from more than 50 Minnesota school districts and charter schools at any of the following virtual job fairs. PELSB licensing executives will be in attendance at these events to answer participants' questions related to licensing, including application, renewal, and qualifications.

All events are virtual, free, and run 3:00 to 7:00 PM

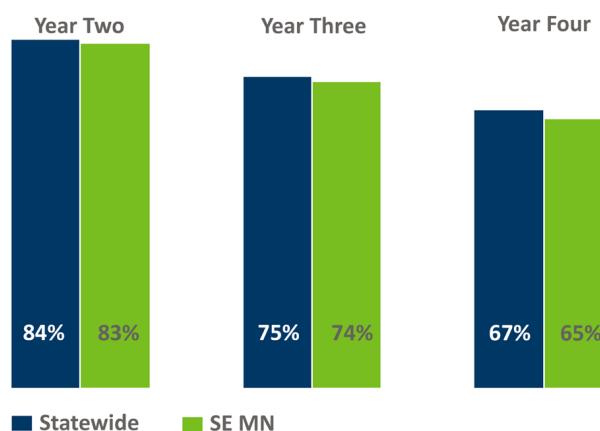
May 11 [Register to attend](#)

June 21 [Register to attend](#)

m MINNESOTA
PROFESSIONAL EDUCATOR
LICENSING AND STANDARDS BOARD



2017 HS Graduates Starting and Persisting to College Graduation



m MINNESOTA
STATEWIDE LONGITUDINAL
EDUCATION DATA SYSTEM

To learn more about how SLEDs data can help your school contact:

Mike Schnell
Community Engagement Coordinator
SLEDs Regional Data Coach
507-281-6683
mschnell@ssc.coop

Future Ready CTE Celebration a Success!

By Sarah Ness

During the April 28 Future Ready CTE Celebration, 89 educators, employers, and professionals celebrated the connections made and partnerships developed over the past year to increase awareness of local careers that fuel our economy and career-connected learning opportunities leading youth to employment in those careers.

Attendees attended a gallery walk and open house of 16 recipients of the Future Ready CTE grant that launched or scaled career and technical education courses and partnerships for immersive experiential learning and pathways to enter careers in these fields. Grant recipients shared project concepts and outcomes to southeast Minnesota stakeholders, bringing awareness to the growing need for career and technical education opportunities in our schools, showcase the impacts of their projects on their students and community, and provide opportunities to network for partnership or replication in future years.

Six amazing southeast Minnesota businesses were nominated for the Outstanding Industry Partner of the Year Award. The award went to Valley Craft Industries Inc. Esteemed nominees included Fastenal, Field Crest Care Center, Nettle Valley Farms, Owatonna Metal Recycling, and Uncle Mony's Restaurant.



Program manager Sarah Ness greeting the celebration's attendees.

Megan Fahy and Tom Pesch, from Valley Craft Industries, Inc., winner of the 2021-2022 Industry Partner of the Year award, pictured here with SSC Career Navigator Kevin Cardille.



A special thank you goes out to iCEV for their breakfast sponsorship.

View the event slide deck [here](#).

In the News...

[View the](#) latest news and media coverage of industry and education partnerships taking place across southeast Minnesota.

GRAUC Lamp of Knowledge and Workforce Innovators Awards

Do you know someone that has committed to higher education opportunities for employees, students, or members? Do they form impactful creative programs to encourage professional growth?



If so, please consider nominating them for the Lamp of Knowledge Award.

Click [here](#) for nomination information.

Feedback Requested: Barriers to FAFSA Completion

The Minnesota Office of Higher Education is working to better understand student barriers to completing the FAFSA/ Minnesota Dream Act application and how we can help alleviate them. Please help us by taking a few moments to [share your thoughts](#) by May 6.

This survey is intended for counselors and other school staff who routinely help students complete these and other financial aid applications.

We anticipate this survey will take between 10 and 15 minutes to complete.

Welcome to SSC!



Trish Busch
Administrative Assistant

I am currently a college student pursuing my bachelor's degree in business management and will graduate in the fall of 2023. My work history has been in banking. I was a banker and loan officer for many

years and worked in scheduling at Mayo Clinic.

I lead a busy life with a house full of boys; my fiancé of nine years, Lupe, and our two boys, Leo, 7, and Angelo, 4. We have two big dogs; Duke, an 8-year-old Black Lab/Rottweiler, and Dax, a Great Dane puppy.

We love to host holidays with our families, summer cookouts, and parties with our friends. We enjoy traveling anywhere that has a beach or nice weather! Experiencing new things in our spare time and trying new restaurants are favorite activities of ours. Doing diamond painting, cooking, being outside, and watching any hospital or first responder drama shows are a few of my other favorite pastimes. I am so excited about this opportunity at SSC and the relationships I will build throughout my career here.

Winning Teams Celebrate Walking Challenge Victories!

By Nicole LaChapelle-Strumski

Over 700 individuals from 20 SSC member organizations enjoyed competing in the 2022 SSC Member vs. Member Walking Challenge.

Wabasha-Kellogg School District Wellness Coordinator Ashley Scheel shared, "We finally did it! We achieved our goal of winning both awards in the same year! The W-K Falcon steppers have been after that since the participation award was added in 2019. This year we had a husband and wife on the team which added some fun tension as to who gets more steps; an elementary teacher or a high school teacher? The W-K staff always looks forward to this friendly and motivating competition. Thank you to Nicole LaChapelle-Strumski from SSC for organizing and the other schools for joining the fun!"

Tracy Morrow, Wellness Coordinator for The City of Dodge Center, stated, "This year's win was exciting for us; last year was our first year and it really motivated us this year to place higher. The fun is getting creative for inside activities. We incorporated an

Congratulations!



The City of Byron
1st Place Participation

Wabasha-Kellogg Public Schools
Grand Champion
(Won both Steps and Participation!)



The City of Dodge Center
1st Place Steps

activity we called 'quick break', which got us up and moving and made for fun work conversation. This challenge really helps start the year off right and creates a little fun after the holidays. Thank you from this year's amazing eight!"

City of Byron Wellness Coordinator Kelli Cheney shared, "We were really pleased to have such high participation

this year. We look forward to competing in this again next year and will strive to win the stepping portion of the challenge."

*If your organization would like to participate in next year's challenge, **contact** Nicole LaChapelle-Strumski. For a list of all the standings, click [here](#).*

Fastenal is Now on the CPC Contract!

Members can now purchase from Fastenal on the CPC Contract! Fastenal is a Winona, Minnesota, based company that offers maintenance, repairs, and operations products and solutions. Under the CPC Contract, members will receive competitively negotiated pricing with discounts ranging from 20% to 50% + based on product category.



Fastenal has indicated that it will not automatically associate Minnesota organizations with the CPC Contract. To associate your account with the CPC Contract, please contact:

Zach Wise at 507-313-7206 or email zwise@fastenal.com

CPC Member Benefits:

- Extensive MRO product offering, including Safety, PPE, Abrasives, Batteries, Electrical Supplies, Fasteners, HVAC, Janitorial & Cleaning Solutions, Lighting, Plumbing, Material Handling, Power & Hand Tools, and more.
- More than 3,100 in-market locations, 15 regional distribution centers, 650 heavy trucks, and 8,300+ local delivery vehicles, providing a short, efficient supply chain for locations across North America.
- Innovative inventory management solutions that lower your total cost of ownership.

Learn more about CPC's contract with Fastenal.

Minnesota State College Southeast Foundation

Scholarships Available

Specific scholarships available to programs in:

- Accounting
- Construction Technology
- Nursing
- Musical Instrument Repair Programs
- Welding
- and MORE!

ONE APPLICATION Qualifies you for multiple scholarships

Applying is easy!

Apply online at www.southeastmn.edu/scholarships

Deadlines to apply: June 30 for Fall Semester, September 30 for Spring Semester

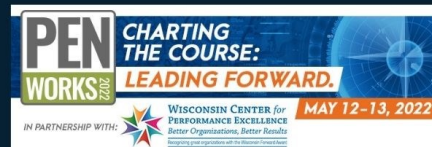
Over 100 scholarships awarded annually!

MINNESOTA STATE COLLEGE
SOUTHEAST

For scholarship questions contact:

877.853.8324, ext. 2663 or email cjohnson@southeastmn.edu

Minnesota State College Southeast is an affirmative action/equal opportunity educator and employer. This document is available in an alternative format upon request by calling 877-853-8324 or 507-453-2700.



EXPERIENCE THE REGION'S LARGEST, MOST POWERFUL CONFERENCE FOCUSED ON CONTINUOUS IMPROVEMENT AND ORGANIZATIONAL EXCELLENCE!



MAURI FRIESTLEBEN

Principal, Minneapolis North High School

Keynote: Love them First: Lessons from Lucy Laney Elementary



DEENA EBBERT

Propellergirl -- International Speaker Inspirational Author

Keynote: Leveraging Your Values: What Propels You



JOHN KRIESEL

Purple Heart Staff Sergeant, fmr MN Representative

Keynote: Still Standing: The Story of SSC John Kriesel

PENWORKS 2022

MAY 12 - 13 AT
MYSTIC LAKE CONFERENCE CENTER

Full conference details and to register please visit

<https://www.performanceexcellencenetwork.org/events/penworks-2022.php>

SSC Board Actions and Information

In addition to routine fiscal and business actions, the Board took the following actions in recent meetings. Complete SSC Board of Directors meeting minutes are available on the SSC website at www.ssc.coop.

January

- Approved the election of officers and committee appointments.
- Approved the MSC Board Appointments.
- Approved permission to post for up to 2.0 FTE for the MDH grant.
- Approved amendments to 2022 board meeting schedule.
- Approved the 2023-2024 Board Meeting Schedule.
- Approved Heartland Statement of Work for CW 2.0 Phase II.

February

- Approved the resignation of Karlyn Brewington, effective February 15, 2022.
- Approved the extension of the grant funded contracts for the Career Navigators and Community Engagement Coordinator through June 30, 2023.
- Approved the mid-year Pool Settlement.
- Approved the 2021-2022 Annual Plan.

March

- Approved a contract with Cheryl Glaeser with Achieve Consulting to lead business planning for SSC's Workforce Development program.
- Approved the hiring of Patricia Busch,

Administrative Assistant, effective April 4, 2022.

- Approved the non-renewal of Shana Moses, RCE Advocate, effective June 30, 2022.
- Approved the recommendation made by the Personnel Committee to adjust minimum and maximum pay ranges based on our bands and grades, as developed by Gallagher.
- Approved contracting with Arnold's Custodial Service to provide both WLMC and SSC cleaning and meeting room setup services.

April

- Approved the personnel committee's staff compensation recommendation.
- Approved the 2022-2023 membership and program fees.
- Approved the consultant contract for Steve Sarvi from 4/4/22 through 6/30/22 to provide Transportation Management Organization (TMO) planning support and outreach on behalf of SE MN Together using grant funding
- Approved the consultant contract for Dr. Kara De La Fosse from 4/11/22 through 7/31/22 to provide school nurse regional supports and certified nursing assistant pathway supports using MDH and YST grant funding.

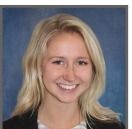
SSC Service Consultants



Bill Colopoulos
Health and Benefits
Consultant
bcolopoulos@ssc.coop



Karen Klein
Regional Manager,
Coop Member Services, ICS
Karen.Klein@ics-builds.com



Annie Dittberner
Account Executive, Holmes
Murphy Consultant
adittberner@ssc.coop



Angie Radel
Regional Manager, IEA
angie.radel@ieasafety.com

Connections is a publication of the Southeast Service Cooperative, published three times per year for members, associates, and the general public.
Editor: Nicole LaChapelle-Strumski, nlachapelle@ssc.coop

Southeast Service Cooperative
210 Wood Lake Drive SE
Rochester, MN 55904
Phone (507) 288-1282
Fax (507) 288-7663

Office Hours:
Monday - Friday
8:00 AM - 4:30 PM
www.ssc.coop

Shaping the Future
for communities of leaders and learners

About Southeast Service Cooperative

Southeast Service Cooperative Staff



Steve Sallee
Executive Director
ssallee@ssc.coop



Alicia Bredeesen
Meeting Center
Coordinator
abredeesen@ssc.coop



Trish Busch
Administrative Assistant
tbusch@ssc.coop



Kevin Cardille
Career Navigator
kcardille@ssc.coop



Amy Grover
Associate Director
agrover@ssc.coop



Chris Hancock
Accounting
Coordinator
chancock@ssc.coop



Katie Hartman
Program Manager
khartman@ssc.coop



Katie Hendrickson
Media and Marketing
Coordinator
khendrickson@ssc.coop



Kari Kubicek
Manager of
Educational Services
kkubicek@ssc.coop



Nicole LaChapelle-Strumski
Program Manager
nlachapelle@ssc.coop



Julie Mitchell
Career Navigator
jmitchell@ssc.coop



Sarah Ness
Program Manager
ssness@ssc.coop



Mike Schnell
Community
Engagement
Coordinator
mschnell@ssc.coop



Jami Schwickerath
Perkins Coordinator
and Career Navigator
jschwickerath@ssc.coop



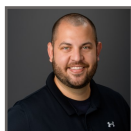
MaryAnne Smith
Career Navigator
msmith@ssc.coop



Kim Swanson
Accounting Assistant
kswanson@ssc.coop



Dale Walston
Director of Operations
dwalston@ssc.coop



Nick Wobig
Career Navigator
nwobig@ssc.coop

Regional Center of Excellence Staff



Jeff Aamot
SE/Metro Director
jaamot@mnce.org



Isabella Anderson Eggen
Advocate
ieggen@mnce.org



Raymond Blackledge
Advocate
rblackledge@mnce.org



Jennifer Bordonaro
Advocate
jbordonaro@mnce.org



Erik Durand
Advocate
edurand@mnce.org



Joe Jezierski
Climate Advocate
jjezierski@mnce.org



Ashley Karlsson
Education System
Specialist
akarlsso@mnce.org



Melanie Lawrence
Advocate
mlawrencesmith@mnce.org



Keitha-Gail Martin-Kerr
Advocate
kmartinkerr@mnce.org



Shana Moses
Advocate
smoses@mnce.org



Cindy Mullins
Advocate
cmullins@mnce.org



Jane Stevenson
Advocate
jstevenson@mnce.org



Carol Swanson
Advocate
cswanson@mnce.org



Perry Wilkinson
Education Equity and
System Specialist
pwilkinson@mnce.org



Sarah Zeigler
Advocate
szeigler@mnce.org

SSC Board of Directors

Brein Maki, Chair
Lewiston-Altura Public Schools

Jean Roth, Vice-Chair
Zumbrota-Mazeppa Public Schools

Lynn Gorski, Treasurer
City of Farmington

Monica Sveen-Ziebell, Clerk
Plainview-Elgin-Millville Public Schools

Theressa Arrick-Kruger
Houston County

Don Leathers
Austin Public Schools

Jason Marquardt
Mabel-Canton Public Schools

Mary Urch
Steele County